

## 400 Amp Single Pin Inline and Panel Mount Connectors

**CLS Series Single Pin Inline**

**Connectors** are designed for maximum resistance to excessive torque loading. Constructed of weatherproof materials.

- NEMA 3R and NEMA 4R rated for wet locations
- UL Listed and CSA Certified
- Accepts up to 400A/600V

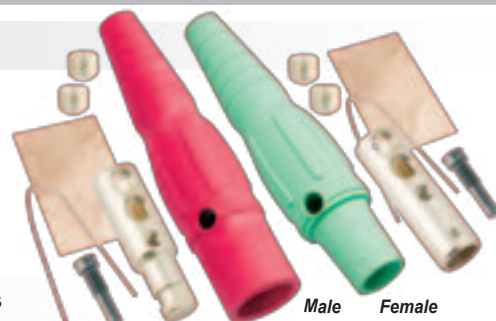
**CL Series Single Pin Panel**

**Mount Connectors** feature super tough nylon housings that won't chip or crack under extreme temperature and impact conditions.

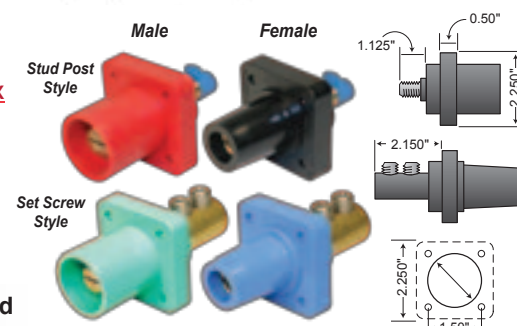
- Stud post or set screw style
- Self-threading screws
- Accepts up to 400A/600V
- Mounts with self-tapping stainless screws, eliminates lock washers and nuts

**400A Inline Connectors**

Size AWG	Male Part Number	Female Part Number
6-2	CLS2MB- <del>X</del>	CLS2FB- <del>X</del>
2-2/0	CLS20MB- <del>X</del>	CLS20FB- <del>X</del>
2/0-4/0	CLS40MB- <del>X</del>	CLS40FB- <del>X</del>

**400A Panel Mount Connectors**

Size AWG	Male Part Number	Female Part Number
<b>Stud Post Style</b>		
2/0-4/0	CL40MRB- <del>X</del>	CL40FRB- <del>X</del>
<b>Set Screw Style</b>		
2-2/0	CL20MRB- <del>X</del>	CL20FRB- <del>X</del>
2/0-4/0	CL40MRB- <del>X</del>	CL40FRB- <del>X</del>

**Protective Covers with Lanyard**

Part Number  
CL40FC-~~X~~  
Fits Female Connector

Part Number  
CL40MC-~~X~~  
Fits Male Connector

**Available colors:**

- Black (A) ● Blue (D) ● Orange (G)
- White (B) ● Green (E) ● Yellow (H)
- Red (C) ● Brown (F)

**TO ORDER**, add desired color code (X) to the part number. Example: CLS2MB-~~C~~

**Custom CLS Cables**

We build **Arctic Ultraflex Blue®** pin connector cables to your exact specifications. Rigorous quality. Lifetime warranty. Call us today!



## 400 Amp Couplers and T Connectors



Hard 3-Line Tap  
Male to 3 Females  
Part Number  
CA3F-~~X~~



Reverse Hard 3-Line Tap  
Female to 3 Males  
Part Number CA3M-~~X~~  
(White (B) and green (E) only)



Soft 3-Line Tap  
Male to 3 Females  
Part Number  
CA3FST-~~X~~



Paralleling T  
Female to 2 Males  
Part Number CPT-~~X~~



Tapping T  
Male to 2 Females  
Part Number CTT-~~X~~

**Available colors:**

- Black (A) ● Red (C) ● Green (E)
- White (B) ● Blue (D)

**TO ORDER**, add desired color code (X) to the part number. Example: CA3F-~~E~~

# 150 Amp Single Pin Inline and Panel Mount Connectors

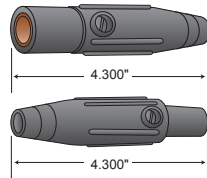
**CLM Series Inline Connectors** have tough nylon housings. Nylon retaining screw provides maximum fixation. Withstands heavy torque loading. Made of weatherproof materials.

- NEMA 3R and NEMA 4R rated for wet locations
- UL Listed and CSA Certified
- Accepts up to 150A/600V

**CLM Series Panel Mount Connectors** are supplied with self-threading screws.

- Stud post or set screw style
- Super tough nylon housing
- Accepts up to 150A/600V

## 150A Inline Connectors 8 to 2 AWG



Male  
Part Number  
CLM2M-**X**

Female  
Part Number  
CLM2f-**X**

## 150A Panel Mount Connectors 8 to 2 AWG

Stud Post  
Style

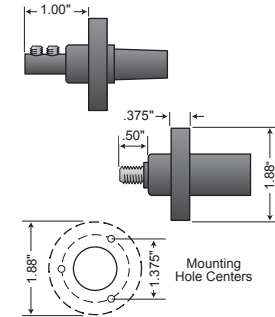
Male  
Part Number  
CLMMRS-**X**

Female  
Part Number  
CLMFRS-**X**

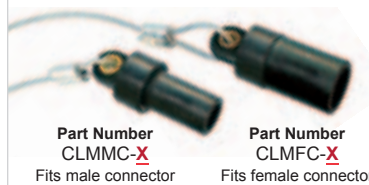
Set Screw  
Style

Male  
Part Number  
CLMMR2-**X**

Female  
Part Number  
CLMFR2-**X**



## Protective Covers with Lanyard



Part Number  
CLMMC-**X**  
Fits male connector

Part Number  
CLMFC-**X**  
Fits female connector

### Available colors:

- Black (A)
- Blue (D)
- Orange (G)
- White (B)
- Green (E)
- Yellow (H)
- Red (C)
- Brown (F)

**TO ORDER**, add desired color code (**X**) to the part number. Example: CLM2M-**B**

# 400 Amp to 150 Amp Cam Reducers

**Cam Reducers and Reducer Connectors** step down cable connections from large cam to small cam inline.

## Cam Reducer

Part Number	Amperage Reduction
CLMAD3F- <b>X</b>	400A / 600V Male to 3 150A / 600V Females

## Reducer Connectors

Part Number	Amperage Reduction
CLMADFF-A	400A Female to 150A Female (available in Black only)
CLMADMF- <b>X</b>	400A Male to 150A Female
CLMADFM- <b>X</b>	400A Female to 150A Male
CLMADMM- <b>X</b>	400A Male to 150A Male



### Available colors:

- Black (A)
- White (B)
- Red (C)
- Blue (D)
- Green (E)

**TO ORDER**, add desired color code (**X**) to the part number. Example: CLMAD3F-**D**

## Custom CLM Cables

Our **Arctic Ultraflex Blue®** single pin connector cables are built to strict quality standards, right here in the USA. Made to order in any quantity. Lifetime warranty. Call to order!

