

Battery Switches

Manual Battery Switches

- Tin-plated copper studs for maximum conductivity and corrosion resistance
- Accepts up to 4/0 AWG cables
- Blue Sea Systems one-piece terminal stud design never loosens over time
- Studs accept 3/8" ring terminals
- 7/8" (22mm) stud length accepts multiple cable terminals
- Switches fit most Perko and Guest low amperage battery switch hole patterns
- Tactile indicator conveys knob position by feel
- Waterproof – rated IP66 from water projected in powerful jets
- Alternator Field Disconnect (AFD) available in some models



Part Number 5511E



Part Number 6006

E Series

- 350 amps continuous rating for inboard gasoline or diesel engines
- Surface, rear, or front panel mounting options

M Series (Mini)

- 300 amps continuous for outboards and small gasoline or diesel engines
- Isolating cover with snap-in side pieces protects rear contacts and allows wire access in any direction

Panel Switches

Contura Switches

- Vibration, shock, thermoshock, moisture and salt spray resistant
- Mounts in Blue Sea Systems Contura Water Resistant Panels and Contura Switch Mounting Panels

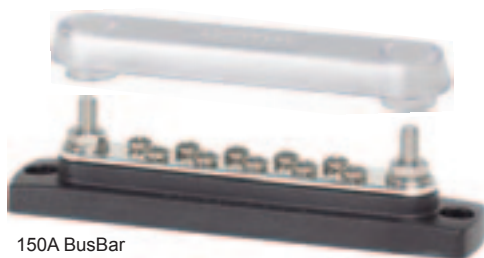
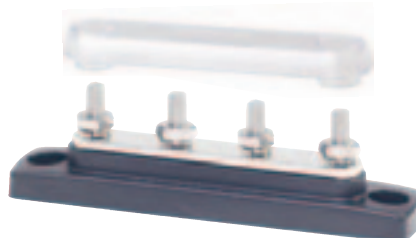


Part Number 7929



Part Number 8287

Bus Bars and Connectors

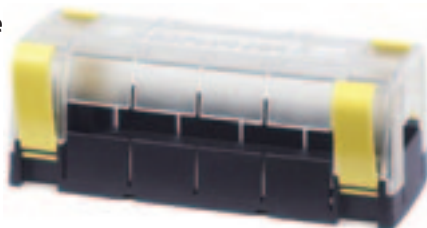
150A BusBar
10 Gang
Part Number 2301Cover for 2301
Part Number 2715100A MiniBus
4 Gang #10-32 Studs
Part Number 2305Cover for 2305
Part Number 2713

BusBar and MiniBus Bus Bar

- The industry standard bus bar for positive distribution, and for the collection of negative or AC ground circuits
- Insert-molded stainless steel stud eliminates need for securing nut and allows high torquing for excellent electrical contact.
- MiniBus bus bars are ideal for limited space applications

MaxiBus Enclosure

- Secure insulating cover with breakouts for superior electrical insulation
- Meets ABYC insulation requirements
- Accepts bus bars 2127, 2128, and other products



Part Number 2719

PowerPost and Mini PowerPost Connectors

- Connects high amp cables securely
- Glass reinforced nylon base
- Stainless steel stud terminates multiple large conductors
- Insulator cap helps guard against accidental grounding

PowerPost
7/8" 5/16-18 Stud
Part Number 2002

DualBus Plus

- Combines negative and positive buses on one block
- Clear cover snaps on to meet Coast Guard and ABYC insulation requirements

150A 5 Gang 1/4"-20 Studs
Part Number 2722

Terminal Block

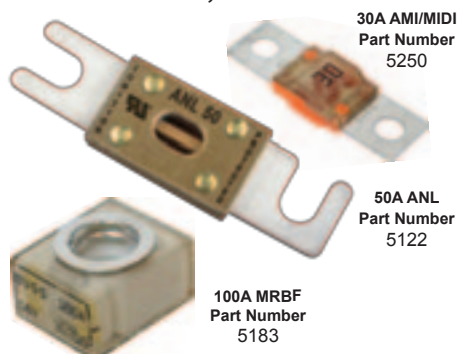
- Each screw pair is one isolated circuit
- Jumpers allow creation of common circuits (sold separately)
- Closed back design completely insulates power from the mounting surface

20A 6 Circuit
Terminal Block
Part Number 2408

AC/DC Fuses

AMI / MIDI, ANL, MRBF Fuses

- Paired with the appropriate fuse holder or block, Blue Sea fuses are ideal for marine and automotive AC and DC electrical systems



Circuit Breakers

A Series Toggle Breaker

- Combines switching and circuit protection into a single device
- Trip-free—can't be held closed after trip
- Meets ABYC standards

Push Button Reset Only Quick Connect Breaker

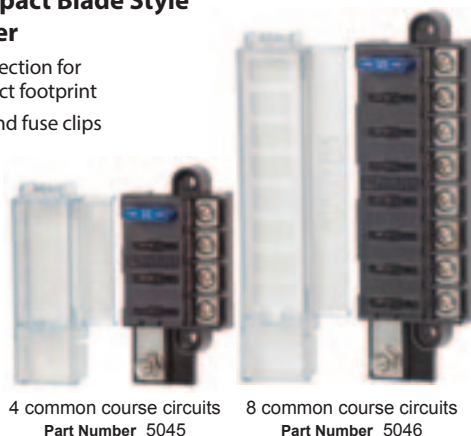
- Branch circuit breakers (can also be used for 24-hour circuit protection)
- Ignition protected—safe for installation on gas powered boats
- Push-to-reset operation, compact size
- Trip-free—can't be held closed after trip



DC Fuse Blocks

Screw Terminal Compact Blade Style Fuse Block with Cover

- Surface mount circuit protection for ATC/ATO Fuses in a compact footprint
- Tin-plated copper buses and fuse clips
- Ignition protected
- Insulating cover satisfies ABYC/USCG requirements
- Single side design allows wire entry from one side to minimize footprint
- Accepts ring or spade type terminals
- Includes write-on circuit labels
- Fuses sold separately



Screw Terminal Blade Style Fuse Block with Cover

- Corrosion resistant, tin plated copper fuse clips reduce heat and improve system efficiency
- 30 amps per circuit; can be used for 24-hour circuits
- Cover satisfies ABYC/USCG insulation requirements
- Cover features easy to open push button latch, label recesses, and storage space for two spare fuses
- Accepts ATC and ATO fast acting blade fuses, and ring or spade type wire terminals
- Includes write-on circuit labels
- Fuses sold separately



12 circuits with negative bus
Part Number 5026

ANL Fuse Block with Insulating Cover

- 5005** - 35A to 300A, max 32 VDC, wire up to 2/0 AWG
- 5003** - 35A to 750A, max 32 VDC, wire up to 4/0 AWG
- Swing out design allows fuse replacement without fastener removal
- Accepts 5/16" (M8) ring terminals
- Insert-molded stainless steel studs resist corrosion and high torquing
- UL 94-V0 reinforced polycarbonate base resists high heat
- Insulating cover satisfies ABYC/USCG requirements
- Cover breakouts for wire access in any direction
- Fuses sold separately



ST-Blade Water-Resistant Fuse Block and Cover

- Compact water-resistant circuit protection for ATO/ATC fast acting blade fuses and low profile circuit breakers
- Accepts one 8 AWG to 4 AWG input wire and up to four 16 AWG to 10 AWG load wires; includes 3 plugs to maintain water resistance if less than 4 loads are required
- 80A per block, 25A per circuit, up to 32V DC
- Accepts standard ring or spade type terminals
- Tin-plated copper busses and fuse clips
- Meets ABYC/USCG insulation requirements
- Includes four write-on circuit labels
- Fuses sold separately



Part Number 5056100

See our **FULL LINE** of Blue Sea components at store.polarwire.com

SY® Power Connectors and Contact Tips

The **SY® Power Connector** is designed for use as a power quick-disconnect in automotive, RV, and marine applications, as well as other high-current DC charging circuits.

SY® connector housings are genderless and mechanically keyed by color—connectors of the same color and size are mated together by simply flipping one over. The keyed design visually and physically prevents accidental cross-mating.

Features

- UL rated for 600 volts
- Single-piece impact-resistant Polycarbonate Lexan® housings
- Superior tolerance to extreme cold and heat
- Solid copper contacts are plated with 99.9% pure silver for maximum conductivity with low resistance
- Unique “ramplock” action allows contacts to be easily mated yet securely locked in position
- Integral tempered 301 stainless steel springs maintain constant pressure on the contacts to ensure consistent, low resistance connections and resist vibration arcing
- Self cleaning design keeps conductive surfaces corrosion-free
- Heat-treated, flared barrels readily accept fine stranded wire

Applications

- Marine, auto, and RV accessories
- Jumper cables and harnesses
- Equipment and Service Trucks
- Allows one connection system to meet multiple needs



-20°C TO 105°C



Contacts



50 Amp	
Part Number	Gauge
SY50-TIP-10	10-12 gauge
SY50-TIP-8	8 gauge
SY50-TIP-6	6 gauge

120 Amp	
Part Number	Gauge
SY120-TIP-6	6 gauge
SY120-TIP-4	4 gauge
SY120-TIP-2	2 gauge

175 Amp	
Part Number	Gauge
SY175-TIP-6	6 gauge
SY175-TIP-4	4 gauge
SY175-TIP-2	2 gauge
SY175-TIP-1	1 gauge
SY175-TIP-1/0	1/0 gauge

350 Amp	
Part Number	Gauge
SY350-TIP-1/0	1/0 gauge
SY350-TIP-2/0	2/0 gauge
SY350-TIP-3/0	3/0 gauge
SY350-TIP-4/0	4/0 gauge

Housings

50 Amp

Part Number	Color
SY50-GRY	Gray
SY50-RED	Red
SY50-BLK	Black
SY50-BLU	Blue
SY50-YEL	Yellow

120 Amp

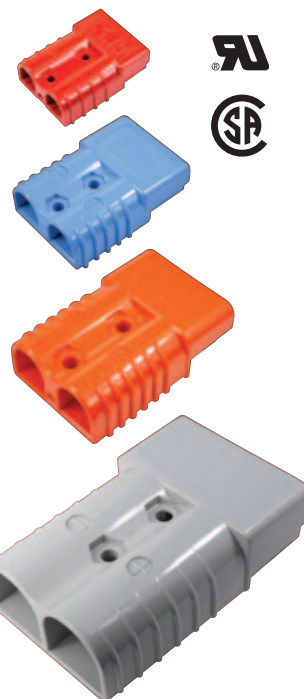
Part Number	Color
SY120-GRY	Gray
SY120-RED	Red
SY120-BLU	Blue

175 Amp

Part Number	Color
SY175-GRY	Gray
SY175-BLU	Blue
SY175-ORG	Orange
SY175-YEL	Yellow
SY175-RED	Red

350 Amp

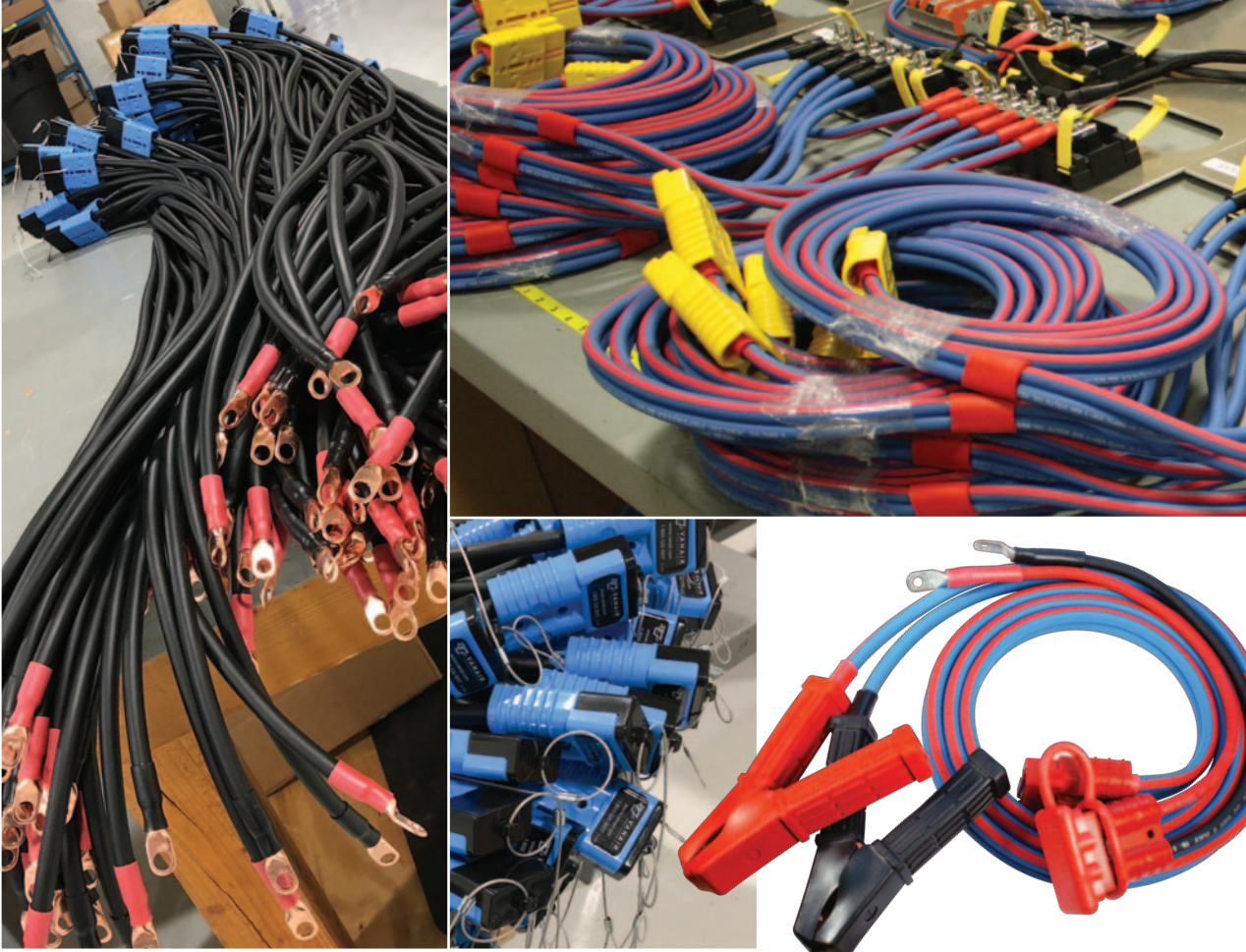
Part Number	Color
SY350-GRY	Gray
SY350-BLU	Blue
SY350-RED	Red
SY350-GRN	Green
SY350-ORG	Orange
SY350-YEL	Yellow



Power Connector Service Kit
available on page 88



Custom Power Connector Cables, Protective Covers



Protective SY Covers

Black Polycarbonate Cover

Housing Size	Part Number
175 Amp	STC905
350 Amp	STC906

Black Rubber Cover

Housing Size	Part Number
350 Amp	STC902-BLK
175 Amp	STC903-BLK
50 Amp	STC904-BLK

Red Rubber Cover

Housing Size	Part Number
350 Amp	STC902-RED
175 Amp	STC903-RED
50 Amp	STC904-RED



Custom Power Connector Cables

Polar Wire Cables and Harness Systems are built with premium cold weather **Arctic Ultraflex Blue®** and **Arctic Superflex Blue®** flexible wire. Get the specific cable configurations you need, properly crimped and shrink sealed for best performance and longevity. Quality checked at every step. Fast turnaround. Call us to order!



400 Amp Single Pin Inline and Panel Mount Connectors

CLS Series Single Pin Inline

Connectors are designed for maximum resistance to excessive torque loading. Constructed of weatherproof materials.

- NEMA 3R and NEMA 4R rated for wet locations
- UL Listed and CSA Certified
- Accepts up to 400A/600V

CL Series Single Pin Panel

Mount Connectors feature super tough nylon housings that won't chip or crack under extreme temperature and impact conditions.

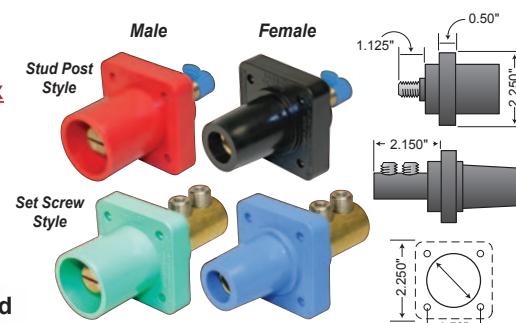
- Stud Post or Set Screw style
- Self-threading screws
- Accepts up to 400A/600V
- Mounts with self-tapping stainless screws, eliminates lock washers and nuts

400A Inline Connectors

Size AWG	Male Part Number	Female Part Number
6-2	CLS2MB- X	CLS2FB- X
2-2/0	CLS20MB- X	CLS20FB- X
2/0-4/0	CLS40MB- X	CLS40FB- X

**400A Panel Mount Connectors**

Size AWG	Male Part Number	Female Part Number
Stud Post Style		
2/0-4/0	CL40MRB- X	CL40FRB- X
Set Screw Style		
2-2/0	CL20MRB- X	CL20FRB- X
2/0-4/0	CL40MRB- X	CL40FRB- X

**Protective Covers with Lanyard**

Part Number
CL40FC-~~X~~
Fits Female Connector

Part Number
CL40MC-~~X~~
Fits Male Connector

Available colors:

- Black (A) ● Blue (D) ● Orange (G)
- White (B) ● Green (E) ● Yellow (H)
- Red (C) ● Brown (F)

TO ORDER, add desired color code (X) to the part number. Example: CLS2MB-C

Custom CLS Cables

We build **Arctic Ultraflex Blue®** pin connector cables to your exact specifications. Rigorous quality. Lifetime warranty. Call us today!



400 Amp Couplers and T Connectors



Hard 3-Line Tap
Male to 3 Females
Part Number
CA3F-~~X~~



Reverse Hard 3-Line Tap
Female to 3 Males
Part Number CA3M-~~X~~
(White (B) and green (E) only)



Soft 3-Line Tap
Male to 3 Females
Part Number
CA3FST-~~X~~



Paralleling T
Female to 2 Males
Part Number CPT-~~X~~



Tapping T
Male to 2 Females
Part Number CTT-~~X~~

Available colors:

- Black (A) ● Red (C) ● Green (E)
- White (B) ● Blue (D)

TO ORDER, add desired color code (X) to the part number. Example: CA3F-E

150 Amp Single Pin Inline and Panel Mount Connectors

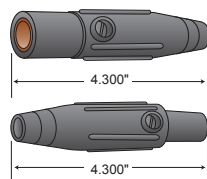
CLM Series Inline Connectors have a Santoprene housing. Nylon retaining screw provides maximum fixation. Withstands heavy torque loading. Made of weatherproof materials.

- NEMA 3R and NEMA 4R rated for wet locations
- UL Listed and CSA Certified
- Accepts up to 150A/600V

CLM Series Panel Mount Connectors are supplied with self-threading screws.

- Stud Post or Set Screw style
- Santoprene housing
- Accepts up to 400A/600V

150A Inline Connectors 8 to 2 AWG



Male
Part Number
CLM2M-**X**

Female
Part Number
CLM2f-**X**

150A Panel Mount Connectors 8 to 2 AWG

Stud Post
Style

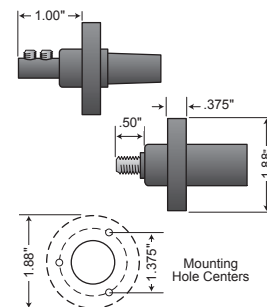
Male
Part Number
CLMMRS-**X**

Female
Part Number
CLMFRS-**X**

Set Screw
Style

Male
Part Number
CLMMR2-**X**

Female
Part Number
CLMFR2-**X**



Protective Covers with Lanyard



Part Number
CLMMC-**X**
Fits male connector

Part Number
CLMFC-**X**
Fits female connector

Available colors:

- Black (A)
- Blue (D)
- Orange (G)
- White (B)
- Green (E)
- Yellow (H)
- Red (C)
- Brown (F)

TO ORDER, add desired color code (**X**) to the part number. Example: CLM2M-**B**

400 Amp to 150 Amp Cam Reducers

Cam Reducers and Reducer Connectors step down cable connections from large cam to small cam inline.

Cam Reducer

Part Number	Amperage Reduction
CLMAD3F- X	400A / 600V Male to 3 150A / 600V Females



Reducer Connectors

Part Number	Amperage Reduction
CLMADFF-A	400A Female to 150A Female (available in Black only)
CLMADMF- X	400A Male to 150A Female
CLMADFM- X	400A Female to 150A Male
CLMADMM- X	400A Male to 150A Male



Available colors:

- Black (A)
- White (B)
- Red (C)
- Blue (D)
- Green (E)

TO ORDER, add desired color code (**X**) to the part number. Example: CLMAD3F-**D**

Custom CLM Cables

Our **Arctic Ultraflex Blue®** single pin connector cables are built to strict quality standards, right here in the USA. Made to order in any quantity. Lifetime warranty. Call to order!

